

SHIBAFOMI WHITEPEPIER

The unique Ecosystem of Shibafomi

There are many promising projects and committed founders, but at least as many hurdles and resistance. Scammers and envious are equally outnumbered. That's why it is absolutely crucial, especially in the initial phase, to take the right paths and work through the project goals within the framework of the roadmap in order to generate the corresponding success.

Even the smallest questions and challenges can lead to frustration for the development team, but also scare off potential investors, since no clear direction and demarcation can be seen. These fragile sequences and processes that build on each other must be 100% coherent and kept comprehensible and transparent.

Every project here follows the same parameters over and over again, which need to be adjusted to individuality. This is where Shibafomi service comes into play.

Who do we do exactly?

Depending on the stage your project is in, you can get free feedback from our team on your development status and current success. Standard parameters are checked and compared with algorithm. Here your project will receive a score. But also a personal message from one of our mentors with some tips and suggestions, what would still be useful or round off the current state

Click here for the free application form.

Shibafomi is thus the living example of the functionality of the service platform and investment program.

Shiba Forest is descended from the Shiba Inu Nun, one of the most important gems of breast culture. Shiba is also the breed of Elon Musk's dog. It has many meanings and is sacred.



Shibafomi can only grow and accomplish its mission with your help. We believe in the power of our community. Spread the word on social media platforms, answer questions, help people, tell your friends. Or, if you have specialized skills, contact us: smart contract development, web

development, multimedia/marketing etc. We also welcome help in moderating our communities, apply any time.

Shibafomi withholds 12% tax on every trade and distributes 5% of it to holders as Shiba Inu, which proves your Shiba Inu ancestry. 2% is spent on team and work. This way, the team generates financial income. 2% goes to burn to reduce supply and over a long time, famine is created, causing an increase in the value of Shibafomi. In order to ensure the flow of money, 2% is added to the liquidity by cutting it off. In this way, it automatically increases its value. As you can see, as tokenomics, we have a regular and forward-looking mechanism.

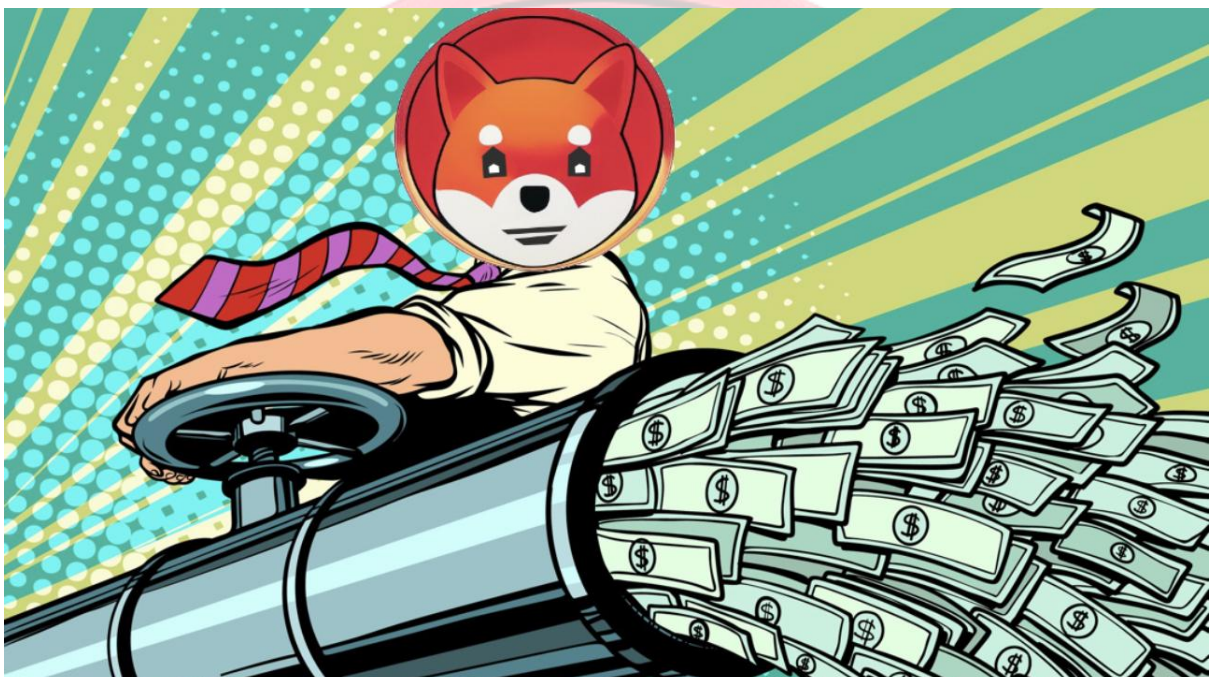
We are an international team consisting of investors, programmers, engineers, founders, project managers and crypto enthusiasts. We are not only invested, but also have already realized and successfully established many projects ourselves. Due to our network we are personally very well connected with many partners and decision makers in the whole field.

If we are particularly interested in a project, we can also advise on payment in the project currency and be available as an investor. However, this possibility only exists if we are allowed to accompany the project to completion and can realize the overall goal together with the project founders.

Profits generated from these projects are used to expand the possible services, marketing measures and also the extraordinary injection of liquidity into the pool or the general expansion of the alternative to mining rewards, we propose allowing users to participate in a smart contract token reflection to produce tokens inside their own wallet

Another challenge remains to facilitate and maintain liquidity on decentralized exchanges. By nature, decentralized exchanges require liquidity for user participation, thus the responsibility is on the developers to provide it. Historically, developers created incentives aimed at users to

provide liquidity which can be outweighed by risk due to the subjectivity of impermanent loss. As a solution, we propose utilizing a smart contract function to automatically capture liquidity to be used on the decentralized exchanges and held in custody independent from user possession. Additionally, a smart contract that provides the capability to burn tokens can promote scarcity by reducing the total supply. Together, the combination of these tokenomics may afford far superior benefits for the community within the decentralized venue.



In order to make Shibafomi more secure, the liquid in the pool is locked. In this way, we prevent a possible hacker attack. We continue to work to take more measures for the trust of our community.

Shibafomi is integrated into the Binance Smart Chain network, and according to its roadmap, it will gradually switch from other networks to the Polygon(Matic) network. In this way, it will expand its ecosystem and grow more and strengthen its community.



While designing Shiba Forest, complex codes were used due to tokenomics. Thanks to these specially written codes, the possibility of stealing assets has been made almost impossible. ([control](#))

```

* - `to` cannot be the zero address.
*/
function _mint(address account, uint256 amount) internal {  ⌨ infinite gas
    require(account != address(0), "BEP20: mint to the zero address");

    _totalSupply = _totalSupply.add(amount);
    _balances[account] = _balances[account].add(amount);
    emit Transfer(address(0), account, amount);
}

/**
 * @dev Destroys `amount` tokens from `account`, reducing the
 * total supply.
 *
 * Emits a {Transfer} event with `to` set to the zero address.
 *
 * Requirements
 *
 * - `account` cannot be the zero address.
 * - `account` must have at least `amount` tokens.
 */
function _burn(address account, uint256 amount) internal {  ⌨ infinite gas
    require(account != address(0), "BEP20: burn from the zero address");

    _balances[account] = _balances[account].sub(amount, "BEP20: burn amount exceeds balance");
    _totalSupply = _totalSupply.sub(amount);
    emit Transfer(account, address(0), amount);
}

/**
 * @dev Sets `amount` as the allowance of `spender` over the `owner`'s tokens.

```

As the ShibaFomi community, our aim is to innovate in the breast industry by being intertwined with technology. Therefore, it aims to be in the Metaverse universe, which is now trending and may be the technology of the future. There will be virtual Shiba dogs in the application to be made for the trading of dogs in its own metaverse universe. Here is the official ShibaFomi to be used here. will be the currency.



At the same time, 50% of Shibafomi was sent to the burning address. Because we need to be listed on more exchanges to grow more. You have no doubt that we will enter more exchanges over time. We must do our best. Every time I burn, 3% will go to the burn again and the supply will decrease continuously.

Null Address: 0x000...dEaD

50,570,922,697.961643376

51.1787%



Shibafomi team has worked hard for this project. They hide their identities and use anonymous names. Just like Elon Musk's son :D Joking aside, the reason we are anonymous is to bring the community to the fore. We put ourselves in the background and highlight Shibafomi. Because our identities are known in real life It will be a problem for us. You can be sure that we will always work here for Shibafomi.

SHIBAFOMI (\$SHIFO)



Website: <https://www.shibafomi.com/>

Twitter: <https://twitter.com/shibafomi>

Telegram: <https://t.me/shibafomitoken>

Github: <https://github.com/shibafomi>

Reddit: <https://www.reddit.com/user/shibafomi>

BscScan:

<https://bscscan.com/token/0x61d9f522b332d1f2ab25d5803371e5eac6cf8808>

